



the hoxton

The Hoxton, Southwark  
40 Blackfriars Road, London, SE1 8PB

# Meetings & party time

6 rooms

# The Apartment

---

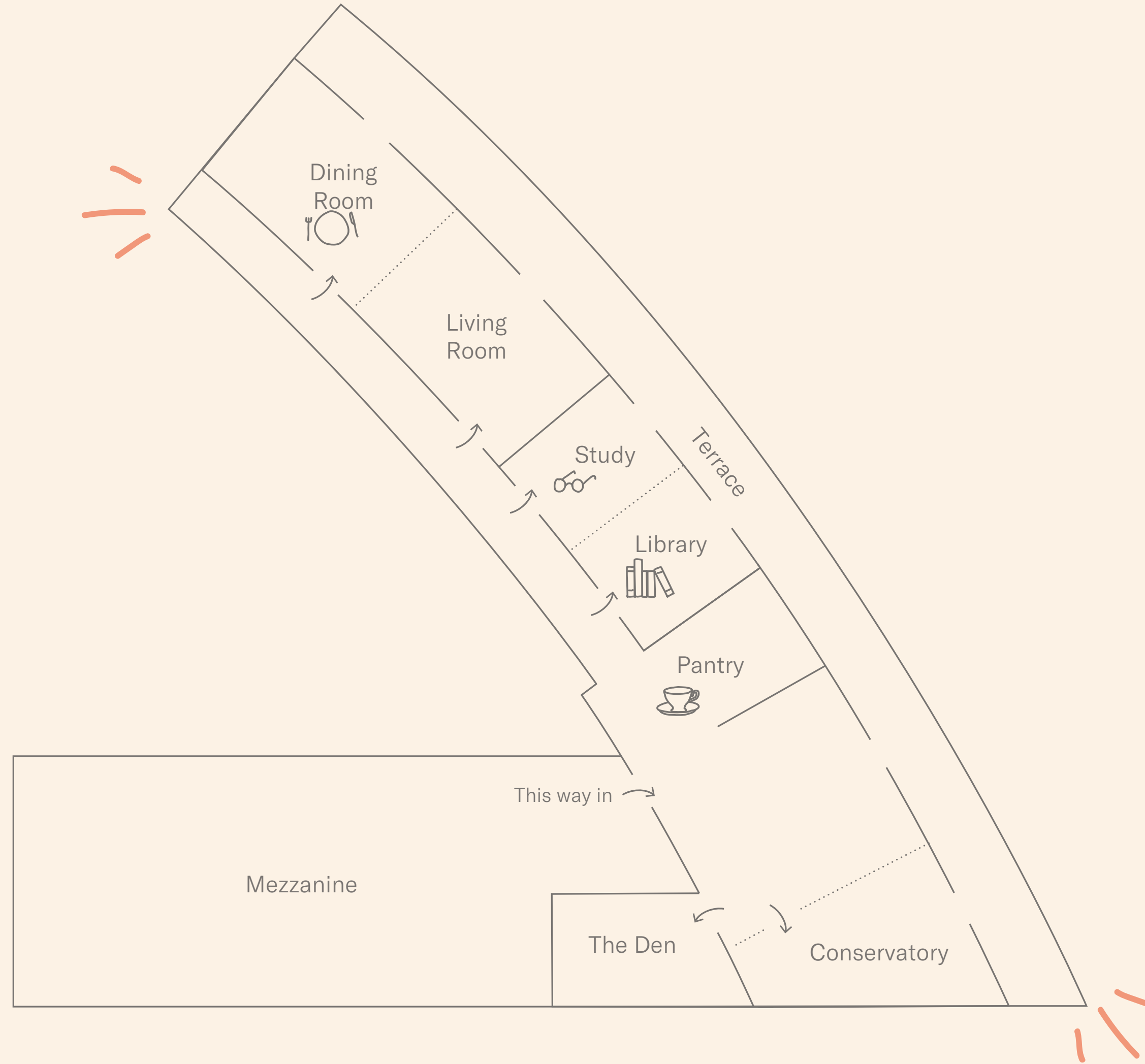
Pitch? Presentation? Party?

The Apartment is a flexible meetings and events space in all our hotels.

Individually designed spaces are made to feel like home, centered around a communal kitchen pantry that transforms into a bar after dark.



# The Apartment | 6 rooms



Room	DIMS (SQM2)	Board-room	Theatre	Dinner	Standing
Dining Room	23.6	12	20	12	-
Living Room	23.6	12	20	12	-
Dining Room + Living Room	47.2	32	40	32	-
Study	10.9	6	-	6	-
Library	10.9	6	-	6	-
Study + Library	21.8	12	16	12	-
Conservatory	17.9	12	18	12	-
Den	15	8	-	8	-
Pantry	58.5	-	-	-	60
The Apartment	160.4	-	-	-	100
The Mezzanine*	-	-	-	-	100

\*Bolt on cost to Apartment  
Exclusive Hire

Want to know more?  
[events.london@thehox.com](mailto:events.london@thehox.com)  
 0207 550 1020

# The Pantry



# Dining Room & Living Room



the hoxton



The Hoxton, Southwark  
40 Blackfriars Road, London, SE1 8PB

# Dining Room



# Living Room



# Study & Library



the hoxton



The Hoxton, Southwark  
40 Blackfriars Road, London, SE1 8PB

Study



the hoxton

The Hoxton, Southwark  
40 Blackfriars Road, London, SE1 8PB

Library



the hoxton

The Hoxton, Southwark  
40 Blackfriars Road, London, SE1 8PB

# Conservatory



Den



Exclusive Hire



the hoxton

The Hoxton, Southwark  
40 Blackfriars Road, London, SE1 8PB

# The Mezzanine



the hoxton

The Hoxton, Southwark  
40 Blackfriars Road, London, SE1 8PB

# 12<sup>th</sup> FLOOR

the hoxton

The Hoxton, Southwark  
40 Blackfriars Road, London, SE1 8PB

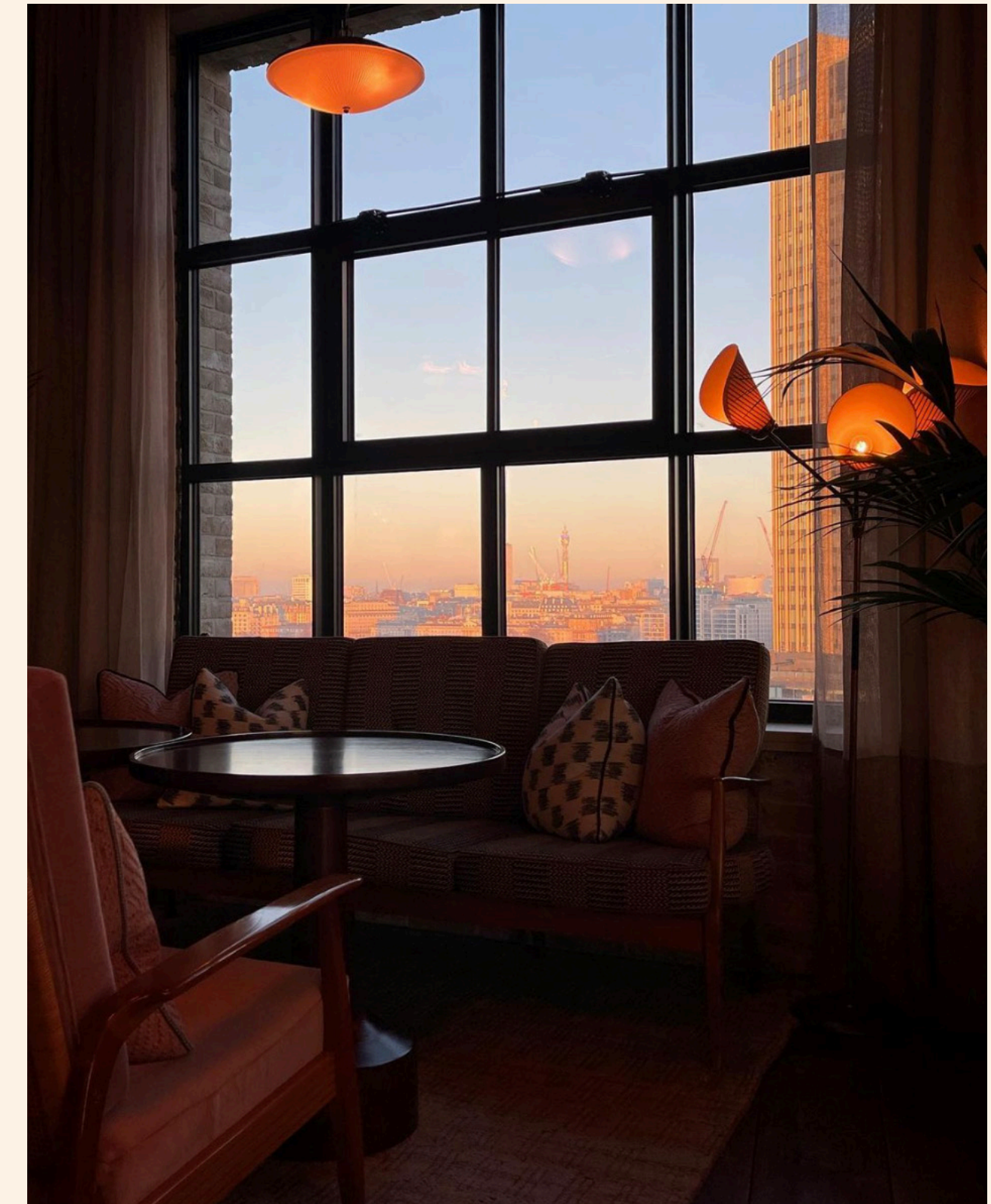
## 12<sup>th</sup> FLOOR

On the hunt for the dream party venue?

Then look no further than our 12th floor – an exclusive hire space for up to 150 people to gather and enjoy epic views of the London skyline. Whatever your event, we've got you covered with a fully stocked bar, DJ equipment, comfy lounge areas and room to dance, plus, the pièce de résistance, your very own open-air terrace.

Our brilliant events team is on hand to help plan all the details so you can relax, safe in the knowledge that it'll be a celebration to remember.





## The Bar

---

Talk about making an entrance... When guests walk through the door they'll be greeted by wow-factor views from sunrise to sunset. At the bar, we can provide cocktails to suit all tastes – from martinis to margaritas – and an array of swish seating including sofas and armchairs that are great to kick back and relax in. If music's your jam, then we can clear a space for a dance floor and get a DJ spinning your perfect playlist.



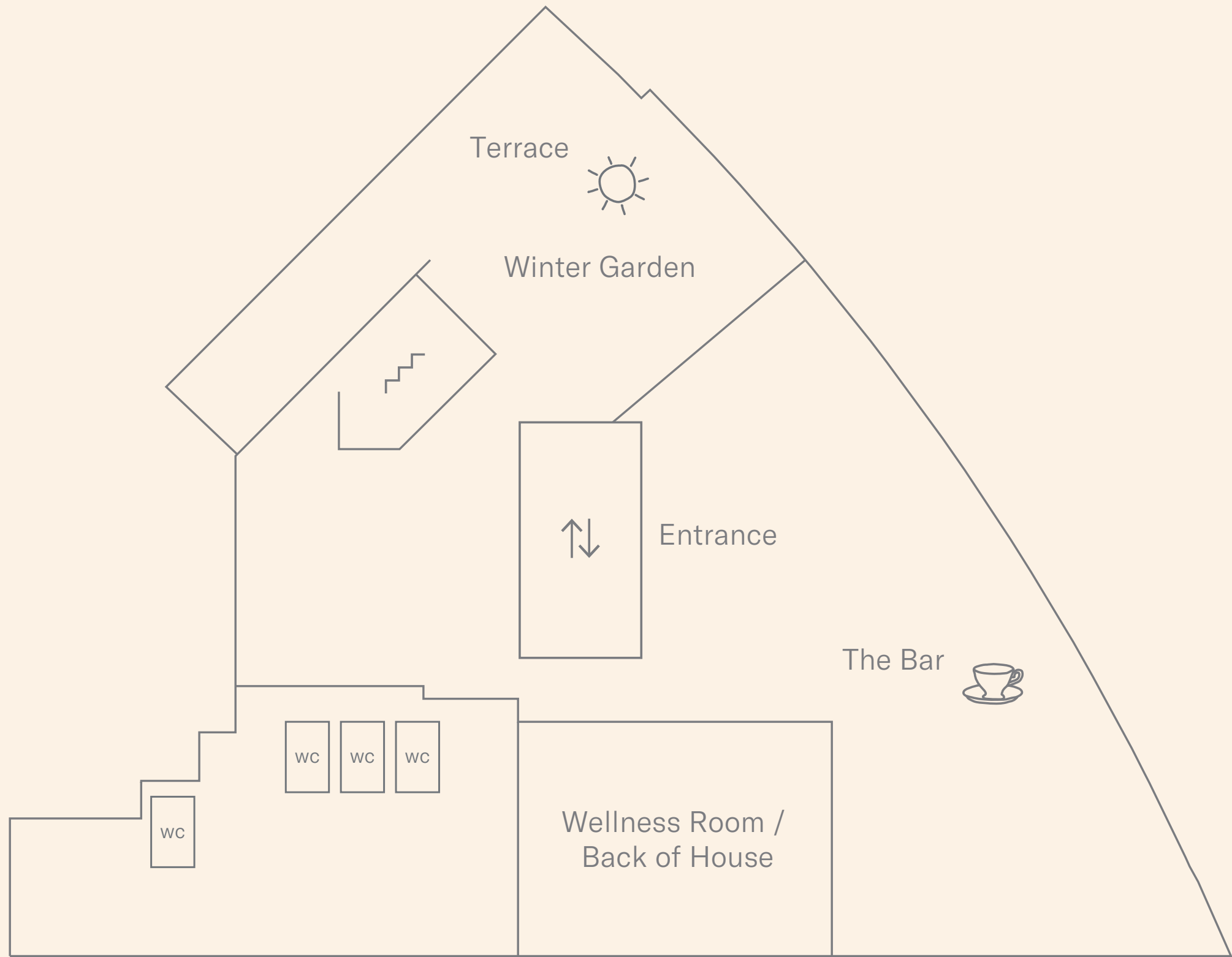


## Winter Garden & Terrace

---

Drink in hand, wander through to the winter garden and terrace, an indoor/outdoor area that's filled with lush greenery and plants for a tropical vibe all year round. With a tiled herringbone floor, rattan lampshades and terracotta pots, it's the epitome of industrial chic.

# Floor Plan



Room	SQM	Theatre	Standing	Seated
Café & Bar	74	50	100	50
Winter Garden & Terrace	41	-	30	16
Exclusive Use	115	50	150	50



**the hoxton**

© Ennismore International Management Limited. Private and Confidential.  
Information and Imagery in this document is not to be edited, copied, shared or distributed.