



The Hoxton, Holborn

199-206 High Holborn, London, WC1V 7BD

Explore our second London home, The Hoxton, Holborn; a stone's throw away from the West End, this former telephone exchange packs a punch.

Just like our doors, our minds are open too. We turn empty car parks into hotels, re imagine old buildings that have interesting stories, and breathe life into new ones. Our hotels are inspired by the streets and scenes that surround them, and each one is an authentic reflection of its neighbourhood

220 rooms

1 restaurant
& 1 bar

7 meeting &
event spaces

the hoxton



The Hoxton, Holborn
199-206 High Holborn, London, WC1V 7BD



220 Rooms

From 12 - 30 sqm2, our rooms range from Shoebox and Snug, to Roomy and Biggy. All our bedrooms, public spaces and restaurants are designed to feel vibrant, cosy and welcoming – like a home away from home.

Hosting a meeting or party?

The Apartment is our unique meeting and events space in the heart of Holborn, with 7 different sized rooms centered around the Pantry Kitchen, which flips to a private bar come evening time. Hire them separately or go big and take the lot!



No rip-off policy

Our rooms have everything you need and nothing you don't. Everyone gets water, fresh milk, coffee and tea, and a fridge that's yours to stock with snacks and drinks from our Hox Shop, where you'll find beers, wines and soft drinks at supermarket prices.



Feelin' peckish?

Head down to Rondo, our neighbourhood restaurant which offers seasonal, modern bistro dishes and great wines for all. Open round the clock, our lobbies are the beating heart of our hotels. with comfy seats, cosy corners, and food and drink on tap, they're spaces where guests can hang out alongside the locals, and immerse themselves in the neighbourhood.

The neighbourhood

A stone's throw from Covent Garden, Oxford Street, Bloomsbury and Farringdon, in Holborn, you're never far from anything — especially with the Piccadilly line and all those 55 buses. With plenty of bars and restaurants to check out, hidden green spaces to get lost in, and shops to go wild for, Holborn's a true London gem.



Did you know?

Now it's the guests and locals that keep the lobby buzzing but before we arrived, this very building was the BT telephone exchange.

How to get here

Holborn Station	2 mins
Kings Cross	10 mins
LCY Airport (by tube)	30 mins
Heathrow Airport	50 mins

Want to know more

events.london@ thehox .com
0207 550 1020

A place to hang | *Our lobby*



the hoxton

The Hoxton, Holborn
199-206 High Holborn, London, WC1V 7BD



Meetings & party time

7 Rooms

the hoxton

The Hoxton, Holborn
199-206 High Holborn, London, WC1V 7BD

The Apartment

Pitch? Presentation? Party? The Apartment is a flexible meetings and events space in all our hotels. Individually designed spaces are made to feel like home, centred around a communal kitchen pantry that transforms into a bar after dark.



The Pantry



the hoxton

The Hoxton, Holborn
199-206 High Holborn, London, WC1V 7BD



Library | Boardroom



Living Room & Library | *Private Dining & Theatre*



Living Room & Library | Boardroom



Dining Room | *Private Dining*

the hoxton

The Hoxton, Holborn
199-206 High Holborn, London, WC1V 7BD

Parlour | Boardroom

the hoxton

The Hoxton, Holborn
199-206 High Holborn, London, WC1V 7BD



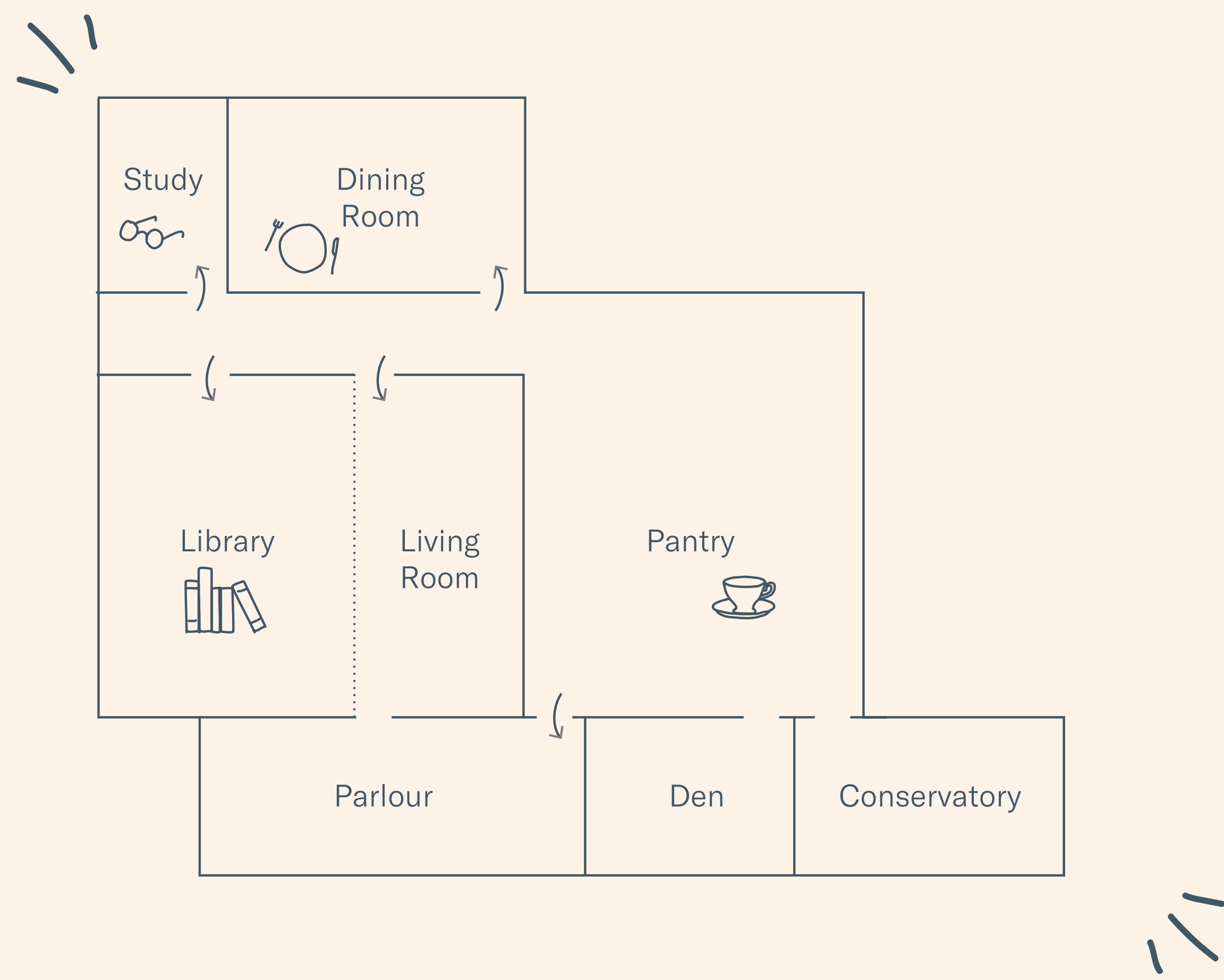
Den | Boardroom

the hoxton

The Hoxton, Holborn
199-206 High Holborn, London, WC1V 7BD

Conservatory | *Private Dining*

The Apartment | 7 rooms



Room	Capacity				
	DIMS (SQM)	Boardroom	Theatre	Seated	Standing
Study	15	6	12	8	12
Dining Room	22	20	8	16	25
Library	48	48	50	40	50
Living Room	32	22	35	-	35
Living Room & Library	80	68	80	80	100
Parlour	29	26	36	30	35
Den	16	8	16	10	16
Conservatory	22	12	20	14	20
Full Apartment	275	80	120	100	200

Living Room & Library & Pantry | *Private Dining*



The image shows a warm, inviting restaurant interior. A long, grey tufted booth runs along the back wall, which is covered in various green plants. Several round wooden tables are set up, some with white tablecloths and others with dark, patterned ones. Each table is set with white plates, cutlery, and glasses. The chairs are made of dark wood with light-colored upholstered seats. The floor is made of large, square tiles in a warm, earthy tone. The lighting is soft and warm, coming from wall-mounted lamps and a large lamp on the left. The overall atmosphere is cozy and sophisticated.

- Destination Dining -

Rondo



the hoxton

Wining and Dining

Our open kitchen serves up a British menu that move with the seasons; considered, bold dishes showcasing local producers and unsung ingredients. With an impressive wine list, this is the place you wish you had at the end of your street.

The Hoxton, Holborn
199-206 High Holborn, London, WC1V 7BD

Wining & Dining | *Rondo*



the hoxton

The Hoxton, Holborn
199-206 High Holborn, London, WC1V 7BD

Wining & Dining | *Rondo*



the hoxton

The Hoxton, Holborn
199-206 High Holborn, London, WC1V 7BD

Wining & Dining | *Rondo*



the hoxton

The Hoxton, Holborn
199-206 High Holborn, London, WC1V 7BD

the hoxton